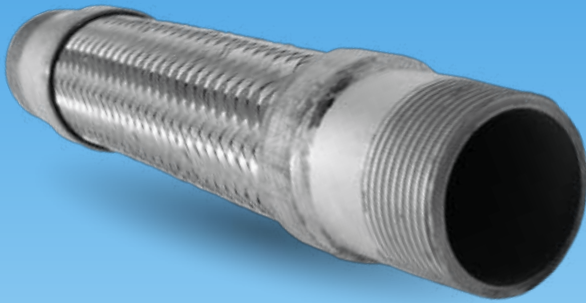


SERIES ST

FLEXIBLE



Datasheet

Features

Performance Curves

475 PSIG
at 850°F

Pressure

1½" to 2"

Size Range

Threaded

Connections

BODY

Stainless steel single braided corrugated hose with SCH40 carbon steel male nipples welded at each end.

SIZES

From 1/2" to 2" (15mm to 50mm)

LENGTHS

From 10" to 14" (250mm to 350mm) other lengths also available.

BRAIDED HOSE

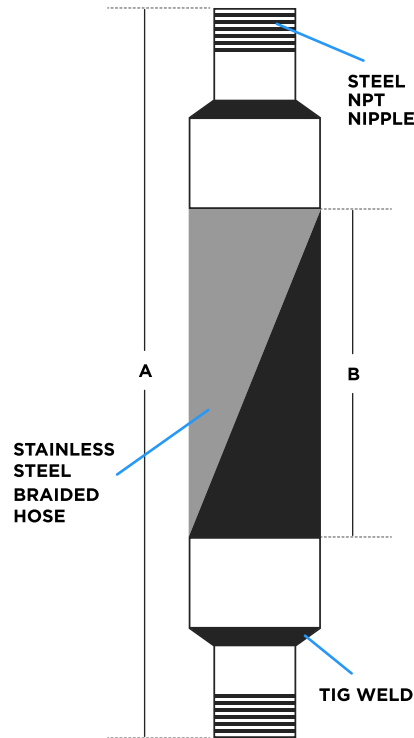
Gives a high temperature leak proof, with appropriate fillings attached you have a connector which allows temperature up to 850°F (457°C) and pressure up to 850 PSI (5860 KPa) at 70°F (21°C).

TEMPERATURE

As working temperature increases, the pressure ratings of corrugated hose decreases.

ALLOWABLE MOTION

Flexible pump connectors will absorb vibration, release stress from mating equipment and allow the correction of some misalignment.



DIMENSIONS				Pressure @ 70°F (21°C)	Weight
MODELS	Sizes	A	B		
ST0050-10	½" 15 mm	9 ¾" 247.65 mm	6 ½" 165.1 mm	750 PSI 5 172 kPa	2 lbs 0.9 kg
ST0075-10	¾" 20 mm	9 ⅞" 248.92 mm			0.75 lbs 0.3 kg
ST0100-10	1" 25 mm	9 ¾" 247.65 mm		—	1 lbs 0.4 kg
ST0125-10	1 ¼" 32 mm	10 ⅛" 256.64 mm	6" 152.4 mm	—	1.5 lbs 0.6 kg
ST0150-10	1 ½" 40 mm	9 ⅞" 248.92 mm	5 ½" 139.7 mm	—	2 lbs 0.9 kg
ST0200-14	2" 50 mm	13 ¾" 349.25 mm	7 ½" 191.5 mm	—	2.5 lbs 1.1 kg

*Other sizes are available but not shown